

Instructions for Use

TRYPTIC SOY AGAR (TSA)

Cat. no. G62	Tryptic Soy Agar (TSA) (without plate label, orientation tabs, and logo), 15x100ml Plate, 23ml	10 plates/bag
Cat. no. G151	Tryptic Soy Agar (TSA), 15x60mm Plate, 12ml	10 plates/bag
Cat. no. J108	TSA / TSA, 15x100mm Biplate, 10ml/10ml	10 plates/bag
Cat. no. L60	TSA, 16x100mm Tube, 5.5ml Slant	20 tubes/box
Cat. no. Q90	TSA w/NaCl 5%, 16x100mm Tube, 5ml	20 tubes/box
Cat. no. Q91	TSA w/NaCl 10%, 16x100mm Tube, 5ml	20 tubes/box
Cat. no. Q92	TSA w/NaCl 20%, 16x100mm Tube, 5ml	20 tubes/box

INTENDED USE

Hardy Diagnostics Tryptic Soy Agar is recommended for use as a general growth medium for the isolation and cultivation of microorganisms. This medium is also recommended for use in the cultivation, storage, maintenance and transportation of pure cultures of microorganisms.

SUMMARY

Tryptic Soy Agar contains digests of soybean meal and casein, making it suitable for the growth of a wide variety of fastidious and nonfastidious microorganisms.^(2-6, 8) The combination of soy and casein peptones supply organic nitrogen in the form of amino acids and polypeptides, making the medium highly nutritious. Sodium chloride is added to maintain the osmotic equilibrium. Products containing additional salt (Cat. nos. Q90, Q91, and Q92) are recommended for use in determining the halotolerance levels of microorganisms. Agar is the solidifying agent.

FORMULA

Ingredients per liter of deionized water:*

Pancreatic Digest of Casein	15.0gm
Peptic Digest of Soybean Meal	5.0gm

Sodium Chloride	5.0gm
Agar	15.0gm

Final pH 7.3 +/- 0.2 at 25°C

In addition,

TSA with NaCl 5% contains 50.0gm of NaCl.

TSA with NaCl 10% contains 100.0gm of NaCl.

TSA with NaCl 20% contains 200.0gm of NaCl.

* Adjusted and/or supplemented as required to meet performance criteria.

STORAGE AND SHELF LIFE

Storage: Upon receipt store plates at 2-8°C away from direct light. Products in tubes and bottles (Cat. nos. Q90, Q91, Q92, and L60) should be stored at 2-30°C away from direct light. Media should not be used if there are any signs of deterioration (shrinking, cracking, or discoloration), contamination, or if the expiration date has passed. Product is light and temperature sensitive; protect from light, excessive heat, moisture, and freezing.

The expiration dating on the product label applies to the product in its intact packaging when stored as directed. The product may be used and tested up to the expiration date on the product label and incubated for the recommended quality control incubation times.

Refer to the document "[Storage](#)" for more information.

PRECAUTIONS

For Cat. nos. G62, J108, and L60.

This product may contain components of animal origin. Certified knowledge of the origin and/or sanitary state of the animals does not guarantee the absence of transmissible pathogenic agents. Therefore, it is recommended that these products be treated as potentially infectious, and handle observing the usual universal blood precautions. Do not ingest, inhale, or allow to come into contact with skin.

This product is for *in vitro* diagnostic use only. It is to be used only by adequately trained and qualified laboratory personnel. Observe approved biohazard precautions and aseptic techniques. All laboratory specimens should be considered infectious and handled according to "standard precautions." The "Guidelines for Isolation Precautions" is available from the Centers for Disease Control and Prevention at www.cdc.gov/ncidod/dhqp/gl_isolation.html.

For additional information regarding specific precautions for the prevention of the transmission of all infectious agents from laboratory instruments and materials, and for recommendations for the management of exposure to infectious disease, refer to CLSI document M-29: *Protection of Laboratory Workers from Occupationally Acquired Infections: Approved Guideline*.

Sterilize all biohazard waste before disposal.

Refer to the document "[Precautions When Using Media](#)" for more information.

Refer to the document [SDS Search](#) instructions on the Hardy Diagnostics' website for more information.

For Cat. nos. G151, H19, Q90, Q91, and Q92.

This product may contain components of animal origin. Certified knowledge of the origin and/or sanitary state of the animals does not guarantee the absence of transmissible pathogenic agents. Therefore, it is recommended that these products be treated as potentially infectious, and handle observing the usual universal blood precautions. Do not ingest, inhale, or allow to come into contact with skin.

This product is for laboratory use only. It is to be used only by adequately trained and qualified laboratory personnel. Observe approved biohazard precautions and aseptic techniques. All laboratory specimens should be considered infectious and handled according to "standard precautions." The "Guidelines for Isolation Precautions" is available from the Centers for Disease Control and Prevention at www.cdc.gov/ncidod/dhqp/gl_isolation.html.

For additional information regarding specific precautions for the prevention of the transmission of all infectious agents from laboratory instruments and materials, and for recommendations for the management of exposure to infectious disease, refer to CLSI document M-29: *Protection of Laboratory Workers from Occupationally Acquired Infections: Approved Guideline*.

Sterilize all biohazard waste before disposal.

Refer to the document "[Precautions When Using Media](#)" for more information.

Refer to the document [SDS Search](#) instructions on the Hardy Diagnostics' website for more information.

PROCEDURE

Specimen Collection: Consult listed references for information on specimen collection.^(2-6, 8) Infectious material should be submitted directly to the laboratory without delay and protected from excessive heat and cold. If there is to be a delay in processing, the specimen should be inoculated onto an appropriate transport medium and refrigerated until inoculation.

Method of Use: Plates should be warmed to room temperature and the agar surface should be dry prior to inoculating. Inoculate and streak the specimen as soon as possible after collection. If the specimen to be cultured is on a swab, roll the swab over a small area of the agar surface. Streak for isolation with a sterile loop. Incubate plates aerobically at 35-37°C for 18-24 hours (some organisms may take longer than 24 hours for visible growth to appear). Examine for colonial morphology.

Spread Plate Method:

1. Prepare decimal dilutions in sterile diluent to obtain 30-300 CFU per plate.
2. Aseptically inoculate agar surface with 0.1ml of well mixed diluted sample.
3. Using a sterile spreader device, distribute the inoculum evenly over the agar surface.

4. Incubate plates aerobically for 1 to 5 days at 35°C.

INTERPRETATION OF RESULTS

Consult listed references for the identification of colony morphology and further biochemical tests required for identification.⁽¹⁻⁵⁾

Following incubation, examine the plates for growth. Count the number of colonies and express in number of colony forming units (CFU) per gram or milliliter of sample. (Take into account the dilution factor.) If duplicate plates were set up, express the average for the two plates in terms of the number of microorganisms per gram or milliliter of sample.

Consult listed references for additional information on interpretation and enumeration of microbial growth on this medium.^(2-6,8)

LIMITATIONS

It is recommended that biochemical, immunological, molecular, or mass spectrometry testing be performed on colonies from pure culture for complete identification.

Refer to the document "[Limitations of Procedures and Warranty](#)" for more information.

MATERIALS REQUIRED BUT NOT PROVIDED

Standard microbiological supplies and equipment such as loops, other culture media, swabs, applicator sticks, incinerators, and incubators, etc., as well as serological and biochemical reagents, are not provided.

QUALITY CONTROL

Hardy Diagnostics tests each lot of commercially manufactured media using appropriate quality control microorganisms and quality specifications as outlined on the Certificates of Analysis (CofA). The following organisms are routinely used for testing at Hardy Diagnostics:

Test Organisms	Inoculation Method*	Incubation			Results
		Time	Temperature	Atmosphere	
<i>Staphylococcus aureus</i> ATCC® 25923	A	24hr	35°C	Aerobic	Growth
<i>Escherichia coli</i> ATCC® 25922	A	24hr	35°C	Aerobic	Growth
<i>Candida albicans</i> ATCC® 10231	A	24hr	35°C	Aerobic	Growth
<i>Bacillus subtilis</i> ATCC® 6633	A	24hr	35°C	Aerobic	Growth
<i>Aspergillus brasiliensis</i> ATCC® 16404	G	1-5 days	20-25°C	Aerobic	Growth

For Cat. no. Q90:					
<i>Staphylococcus aureus</i> ATCC® 25923	A	24hr	35°C	Aerobic	Growth
<i>Escherichia coli</i> ATCC® 25922	B	24hr	35°C	Aerobic	Inhibited
For Cat. no. Q91:					
<i>Staphylococcus aureus</i> ATCC® 25923	A	24-48 hrs	35°C	Aerobic	Growth
<i>Escherichia coli</i> ATCC® 25922	B	24-48 hrs	35°C	Aerobic	Inhibited
For Cat. no. Q92:					
<i>Staphylococcus aureus</i> ATCC® 25923	A	24hr	35°C	Aerobic	Inhibited
<i>Escherichia coli</i> ATCC® 25922	B	24hr	35°C	Aerobic	Inhibited

* Refer to the document "[Inoculation Procedures for Media QC](#)" for more information.

USER QUALITY CONTROL

End users of commercially prepared culture media should perform QC testing in accordance with applicable government regulatory agencies, and in compliance with accreditation requirements. Hardy Diagnostics recommends end users check for signs of contamination and deterioration and, if dictated by laboratory quality control procedures or regulation, perform quality control testing to demonstrate growth or a positive reaction and to demonstrate inhibition or a negative reaction, if applicable. Hardy Diagnostics quality control testing is documented on the certificates of analysis (CofA) available from Hardy Diagnostics [Certificates of Analysis](#) website. In addition, refer to the following document "[Finished Product Quality Control Procedures](#)," for more information on QC or see reference(s) for more specific information.

PHYSICAL APPEARANCE

Tryptic Soy Agar should appear translucent, and light amber in color.



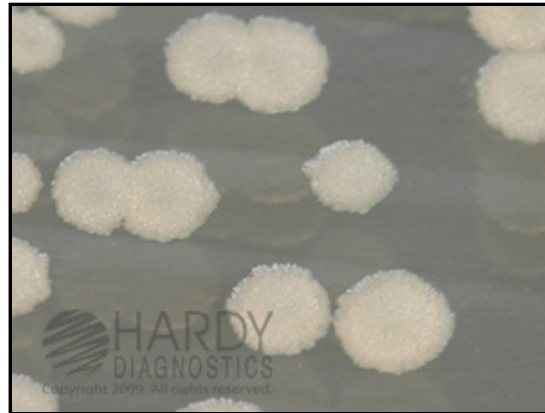
Staphylococcus aureus (ATCC® 25923) colonies growing on TSA (Cat. no. G62). Incubated aerobically for 24 hours at 35°C.



Escherichia coli (ATCC® 25922) colonies growing on TSA (Cat. no. G62). Incubate aerobically for 24 hours at 35°C.



Candida albicans (ATCC® 10231) colonies growing on TSA (Cat. no. G62). Incubated aerobically for 48 hours at 35°C.



Bacillus subtilis (ATCC® 6633) colonies growing on TSA (Cat. no. G62). Incubated aerobically for 24 hours at 35°C.



Uninoculated plate of TSA (Cat. no. G62).

REFERENCES

1. Anderson, N.L., et al. *Cumitech 3B; Quality Systems in the Clinical Microbiology Laboratory*, Coordinating ed., A.S. Weissfeld. American Society for Microbiology, Washington, D.C.
2. Jorgensen, J.H., et al. *Manual of Clinical Microbiology*, American Society for Microbiology, Washington, D.C.
3. Tille, P. *Bailey and Scott's Diagnostic Microbiology*, C.V. Mosby Company, St. Louis, MO.
4. American Public Health Association. *Standard Methods for the Examination of Water and Wastewater*, APHA, Washington, D.C.
5. Isenberg, H.D. *Clinical Microbiology Procedures Handbook*, Vol. I, II & III. American Society for Microbiology, Washington, D.C.
6. MacFaddin, J.F. 1985. *Media for Isolation, Cultivation, Identification, Maintenance of Bacteria*, Vol. I. Williams & Wilkins, Baltimore, MD.
7. *Quality Assurance for Commercially Prepared Microbiological Culture Media*, M22. Clinical and Laboratory Standards Institute (CLSI - formerly NCCLS), Wayne, PA.
8. APHA Technical Committee on Microbiological Methods for Foods. *Compendium of Methods for the Microbiological Examination of Foods*. APHA, Washington, D.C.

ATCC is a registered trademark of the American Type Culture Collection.

IFU-10809[A]



1430 West McCoy Lane, Santa Maria, CA 93455, USA

Phone: (805) 346-2766 ext. 5658

Fax: (805) 346-2760

Website: www.HardyDiagnostics.com

Email: TechService@HardyDiagnostics.com

[Ordering Information](#)

Distribution Centers:

California · Washington · Utah · Arizona · Texas · Ohio · New York · Florida · North Carolina

The Hardy Diagnostics manufacturing facility and quality management system is certified to ISO 13485.

Copyright© 2020 by Hardy Diagnostics. All rights reserved.

HDQA 2207F [C]